

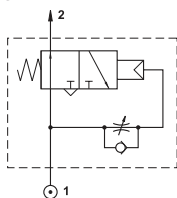
# PILOT, LOGIC & SPECIALIST VALVES SPECIALIST VALVES



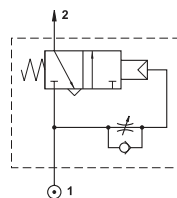
## Specification

| Model                           | KP100014                                    | KP100094 | KP010444                 | KP010464                 | KP100354                 | KP000744                 | KP2005                     |
|---------------------------------|---|----------|--------------------------|--------------------------|--------------------------|--------------------------|----------------------------|
| Fluid                           | Air (to be filtered by 50µm filter element) |          |                          |                          |                          |                          |                            |
| Port                            | G1/8"                                       |          | G1/4"                    |                          |                          | G1/8"                    | M5                         |
| Working Pressure                | 0.2 - 1MPa (30 - 145psi)                    |          |                          |                          | 0.3 - 1MPa (45 - 145psi) | 0.2 - 1MPa (30 - 145psi) | 0.3 - 0.8MPa (45 - 116psi) |
| Actuating Pressure              | -   | -        | 0.3 - 1MPa (45 - 145psi) | 0.2 - 1MPa (30 - 145psi) | 0.3 - 1MPa (45 - 145psi) | -                        | -                          |
| Temperature                     | 0°C to +60°C                                |          |                          |                          |                          |                          |                            |
| Material of Body                | Aluminium                                   |          |                          |                          |                          |                          |                            |
| Material of Spring              | Stainless Steel                             |          |                          |                          |                          |                          |                            |
| Material of Seals               | NBR   |          |                          |                          |                          |                          |                            |
| Material of Internal Components | Brass                                       |          |                          |                          |                          |                          |                            |
| Material of Spool               | -   | -        | Nickel Plated Aluminium  |                          |                          | -                        | -                          |
| Time Regulating range           | 0 - 15 sec                                  |          |                          |                          | -                        | 0 to 15 sec              | -                          |

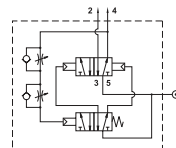
## Symbols



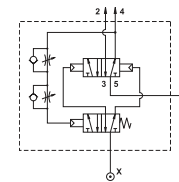
Impulse Valve, NO



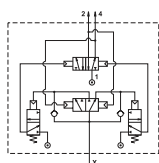
Impulse Valve, NC



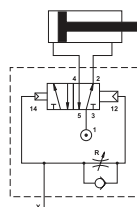
Oscillating Valve, Continuing Cycle



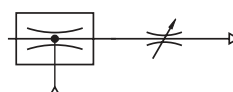
Oscillating Valve, Pneumatically Piloted



Flip Flop Valve, Pneumatically Piloted



High Flow Pneumatic Timer for Automatic Return



Vacuum Driven Liquid Sprayer

# PILOT, LOGIC & SPECIALIST VALVES SPECIALIST VALVES



## Dimensions Flip Flop Valve

Model:

- **KP100354**

## Valve Operation

The valve is a high-flow valve which, by applying a pilot pressure to point X, will, for example, extend and retract a double acting cylinder. The 'flip-flop' valve requires two pilot signals for a complete cycle: one momentary signal to extend the cylinder stroke and one momentary signal to retract. A maintained pilot signal will generate one half of the cycle. The valve will stay in this position until the signal is exhausted and then applied again. In the event of a pilot pressure failure or system maintenance a manual override facility is provided.

