

# MANUAL & MECHANICAL VALVES



## Installation & Application Data

- 1) Before installing, be sure the valve hasn't been damaged in transit.
- 2) Use clean air filtered to  $40\mu\text{m}$ . Be aware of the flow direction & port size.
- 3) Please note whether the installation conditions meet the technical requirements (such as actuation frequency, working pressure & temperature) before installing the valve.
- 4) Notice the flow direction of air during installation, P is the air input, A (B) is the outlet port and R (S) is the exhaust port.
- 5) Avoid freezing temperature and vibration.
- 6) Before using fittings and tube make sure they are clean.

# FLOW CONTROL VALVES



## Specification

Model	K100-06	K200-08	K300-10	K300-15	
Fluid	Air (to be filtered by 40µm filter element)				
Port	1/8"	1/4"	3/8"	1/2"	
Pressure Range	0.05 -1.0MPa 7 - 145psi				
Proof Pressure	1.5MPa(215psi)				
Temperature Range	-20 to +70°C				
Material of Body	Aluminum Alloy				
Flow (L/min)	Control flow	200	450	1250	1650
	Free flow	400	800	1500	2500

## Product Features

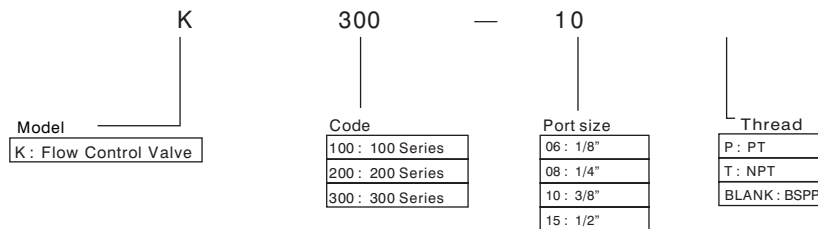
Compact design.

Available to control and cut off flow, precise adjustment.

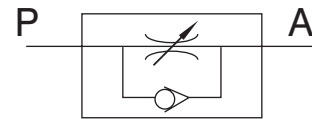
Can be installed horizontally or vertically.

G thread as standard PT & NPT are available on request

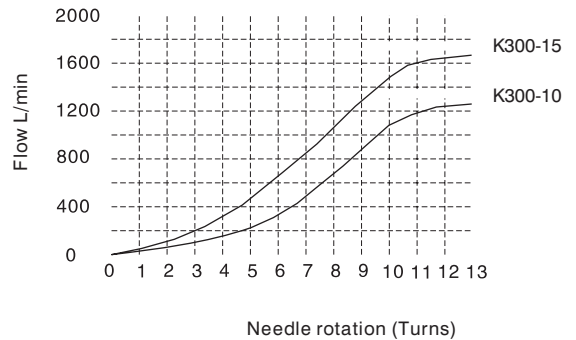
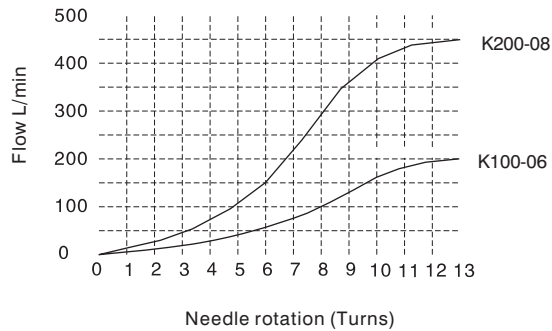
## Ordering Codes



## Symbol



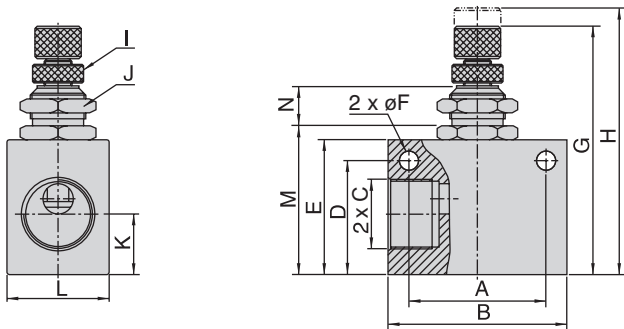
## Flow Charts



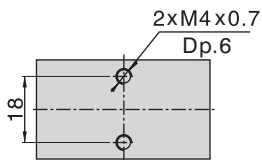
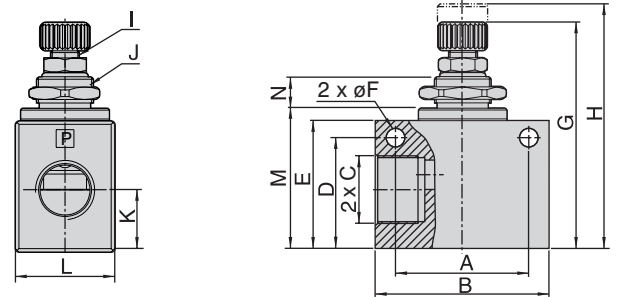
# FLOW CONTROL VALVES

## Dimensions

### K100 & K200

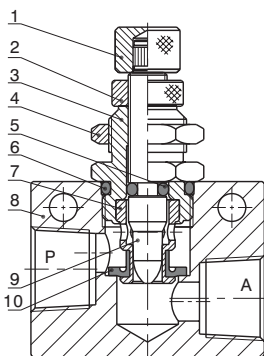


### K300



Model/Item	K100-06	K200-08	K300-10	K300-15	Model/Item	K100-06	K200-08	K300-10	K300-15
A	22	26	35	35	H	52.3	56.3	74	74
B	32	36	50	50	I	M6 x 0.5	M6 x 0.5	M8 x 0.75	M8 x 0.75
C	1/8"	1/4"	3/8"	1/2"	J	M12 x 0.75	M12 x 0.75	M16 x 1.0	M16 x 1.0
D	18	23	32	32	K	10	13.5	17.5	17.5
E	23	27	37	37	L	18	18	28	28
F	4.3	4.3	5.3	5.3	M	26	30	40.5	40.5
G	46.8	50.8	65	65	N	8.6	8.6	10.2	10.2

## Inner Structure



No.	Item	No.	Item
1	Adjustment Cap	6	Spool Spring
2	Clamping Cap	7	Throttle Sheath
3	Throttle Body	8	Body
4	Hexagon Nut	9	Throttle Column
5	Spool Spring	10	Spool O-ring