

INSTRUCTION SHEET

VACUUM PUMP SERVICE

KIT SK2119

⚠ CAUTION: Improper assembly or use of damaged parts may lead to premature failure. To avoid frequent repairs follow these assembly procedures.

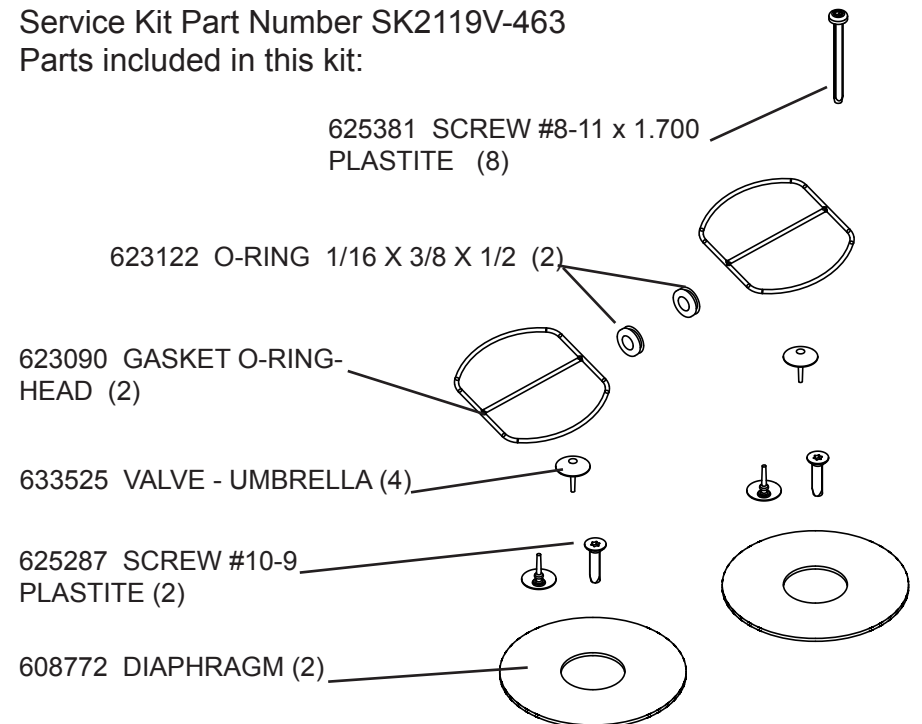
⚠ NOTE: Before you begin read these instructions thoroughly. Assemble the necessary tools. You will need a T-15 and T-20 Torx driver for a torque wrench, a side cutter and clean, soft cloths.

⚠ WARNING: Unplug the compressor before beginning disassembly.

ALWAYS NOTE POSITION AND ORIENTATION OF PARTS AS REMOVED TO ASSURE CORRECT POSITIONING WHEN REASSEMBLING.

Service Kit Part Number SK2119V-463

Parts included in this kit:



THOMAS
A Gardner Denver Product
Sheboygan, Wisconsin USA

Part No. 642748
©2006 Gardner Denver Thomas Inc.
Printed in U.S.A. All Rights Reserved

INTAKE & EXHAUST VALVE REPLACEMENT

ATTENTION: Service one side of the compressor at a time to avoid confusion.

1. Remove 4 head screws and head cap. Discard screws. Set head cap aside. Carefully remove connector tube from head. Remove head from housing.
2. Remove gasket and discard.
3. Remove intake and exhaust umbrella valve by grasping the top and pulling from the head.
4. Wipe inside of head with a clean soft cloth, be sure to remove any excess gasket.
5. Remove and replace the o-rings on the connector tube.

5. Replace umbrella valves by placing the stem into the center of the port and pulling the stem from the other side of head to seat valves.
6. Trim the exhaust valve stem to be flush with the face of the head. This is to prevent an interference fit with the diaphragm.

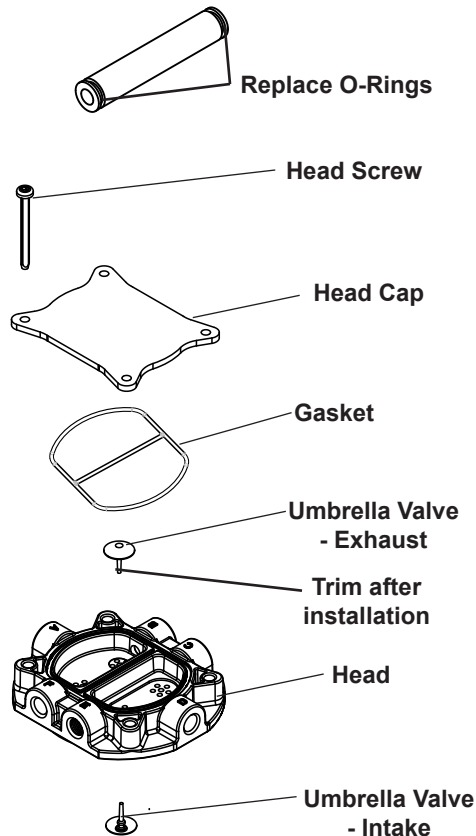


Figure #1

DIAPHRAGM REPLACEMENT

1. Remove hold down plate screw, hold down plate and diaphragm from connecting rod top. Wipe connecting rod top and hold down plate with a clean soft cloth.
2. Center new diaphragm and hold down plate over connecting rod holes. Make sure all holes align properly and that the diaphragm is centered in the well of the housing. Insert new screw. Torque screw to 35 in-lbs.
3. Replace the connector tube into the heads. Place the head, o-ring gasket, and head cap onto the housing. Torque new head screws to 35 in-lbs. in a criss-cross pattern.

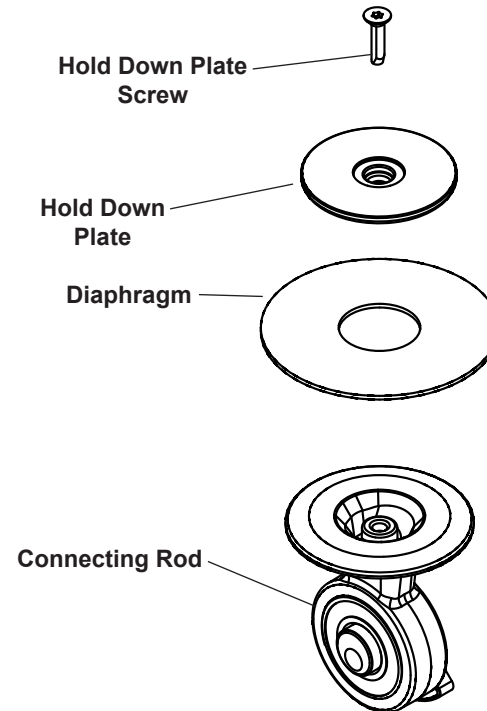


Figure #2