



# 319 SERIES

## PRESSURE/VACUUM (DC VOLTAGE)

### BASE MODELS

319CDC50/12

319CDC50/24

### CUSTOM CONFIGURED OPTION

- 24V DC motor
- Stroke (Flow and/or pressure)
- Air dryer
- Dump solenoid
- Shock mount



319 Series

### FEATURES (BENEFITS)

- Black epoxy coated compressor exterior (Corrosion resistance)
- Oil-less operation (Clean air stream, less maintenance)
- Permanently lubricated bearings (Optimum life)
- Stainless steel inlet valve (Consistent performance, corrosion resistance)
- PTFE piston ring (Optimum life)
- Die-cast aluminum components (Strong, lightweight, durable)
- Coated steel mounting brackets with vibration isolators (Ease of component integration)
- Wetted parts treated for corrosion resistance (Optimum life, consistent performance)
- Dynamically balanced (Low operating vibration)
- Thermally protected motor (Fail-safe operation)
- Designed and tested per Agency standards (Fail-safe operation)
- Inlet filter/exhaust muffler (Quiet, clean operation)
- RoHS compliant (Green, eco-friendly)
- Radiated Emissions Suppression ECE-R10-03 (Interference free operation)

**Qualified OEM designers should  
consult factory for purchase or custom configurations**

- 920-457-4891 or [td.usa@gardnerdenver.com](mailto:td.usa@gardnerdenver.com)
- Minimum order quantities may apply

Thomas Division is an ISO 9001 registered company

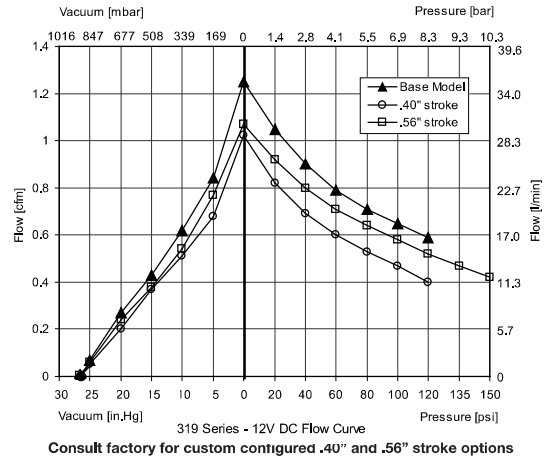
**THOMAS**  
A Gardner Denver Product

**WOB-L®****319 Series Base Models****THOMAS**  
A Gardner Denver Product

<b>Max. flow</b>	<b>1.27 cfm (35.4 l/min)</b>
<b>Max. int. pressure</b>	<b>120 psi (8.3 bar)</b>
<b>Max. vacuum</b>	<b>93% local barometer</b>



**319**  
Available in  
12 or 24 volt DC

**Base Model Number 319CDC50/12 , 319CDC50/24****Performance Data**

Head configuration	Pressure/vacuum
Stroke	0.50 in (12.7 mm)
Nominal voltage	12V DC [24V DC]
Maximum open air flow	1.25 cfm (35.4 l/min)
Maximum rated intermittent pressure	120 psi (8.3 bar)
Current at rated pressure	19.4A [8.9A]
Power at rated pressure	233W [108W]
Speed at rated pressure	3173 rpm [3035rpm]
Maximum duty cycle at 100 psi at 23°C	8.5 minutes on, 20 minutes off
Maximum pressure restart	120 psi (8.3 bar)
Maximum vacuum	93% local barometer
Maximum vacuum restart	Max. vacuum

**Electrical Data**

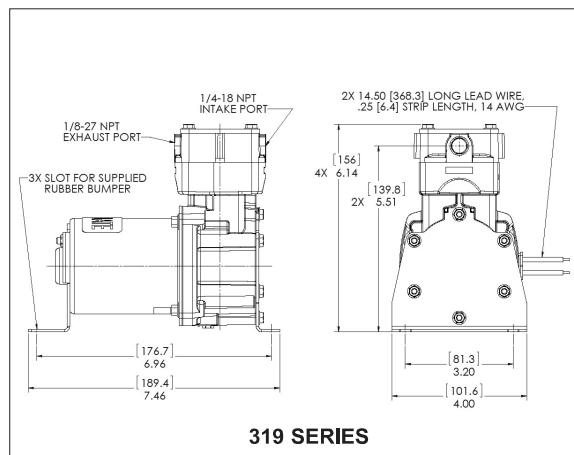
Motor type	Permanent Magnet
Locked rotor current	134.0A [69.0A]
Motor insulation class	B
Thermal switch	Yes
Motor lead wire color, gauge	Red/black, 14 AWG
Solenoid wire color, gauge	--

**General Data**

Operating ambient air temperature	-40°F to 158°F (-40°C to 70°C)
Safety certification	CE/TUVE11
Net weight	5.1 lbs (2.3 kg)

**Product Dimensions**

Dual Dimensions: in[mm]

**319 SERIES**

©2011 Gardner Denver Thomas, Inc.  
All rights reserved.  
Form No. 850-4003 01/12

The information presented in this material is based on technical data and test results of nominal units. It is believed to be accurate and reliable and is offered as an aid to help in the selection of Thomas Division products. It is the responsibility of the user to determine the suitability of the product for its intended use and the user assumes all risk and liability whatsoever in connection therewith. Thomas Division does not warrant, guarantee or assume any obligation or liability in connection with this information. **NOTE:** Models pictured are representative of the series and do not represent a specific model number. Consult factory for detailed physical description.

**Thomas Division**  
1419 Illinois Ave  
Sheboygan, WI 53081 USA  
Phone: 920-457-4891  
Fax: 920-451-4276  
www.gd-thomas.com