

DIAPHRAGM



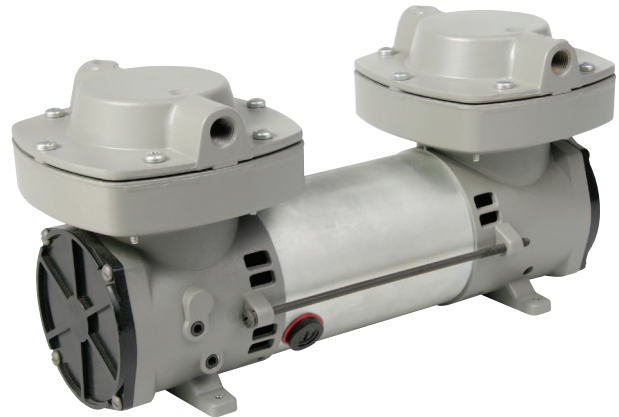
910 & 2907 SERIES

MODELS

910CDC22/12
2907CDC22/12



910CDC22/12



2907CDC22/12

FEATURES

- Oil-less operation
- Permanently lubricated bearings
- Field service capability
- Stainless steel valves and aluminum valve plate
- Lightweight die-cast aluminum head and diaphragm hold down plate
- Long-life diaphragm
- Inlet filter
- Balanced for smooth, low vibration operation
- Replaceable brushes (910 only)
- Service Kit SK927 (910 only)

Consult factory for custom applications

Thomas Division is an ISO 9001 registered company

THOMAS
A Gardner Denver Product

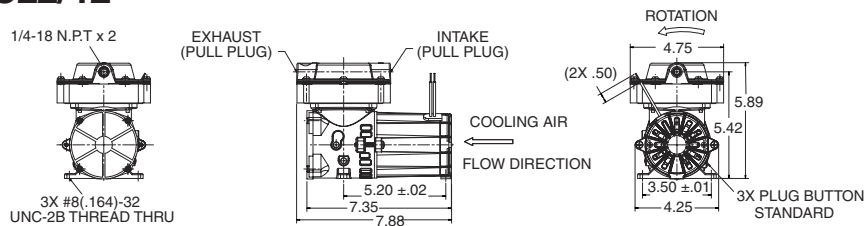
910 & 2907 Series Performance Data

MODEL NUMBER		910CDC22/12		2907CDC22/12	
HEAD CONFIGURATION		Pressure/Vacuum		Pressure/Vacuum	
STROKE		.220 Inches		.220 Inches	
PRESSURE		Flow @ 12v		Flow @ 12v	
CFM @ PSI	LPM @ bar				
PSI	bar	CFM	LPM	CFM	LPM
0	0	1.97	55.8	3.20	90.6
5	.5	1.72	45.5	2.89	77.2
10	1.0	1.47	37.0	2.53	63.5
15	1.5	1.29	29.7	2.21	
20	2.0	1.10	23.7		
25	3.0	.95	10.4		
30	5.0	.79			
35	7.0	.64			
40	10.0	.48			
MAX. CONTINUOUS PRESSURE		25 PSI	1.7 bar	15 PSI	1.0 bar
MAX. INTERMITTENT PRESSURE		40 PSI	2.8 bar	15 PSI	1.0 bar
VACUUM		Flow @ 12 v		Flow @ 12 v	
CFM @ IN. hg	LPM @ mbar (gauge)				
IN. hg	mbar (gauge)	CFM	LPM	CFM	LPM
0	0	1.97	55.8	3.20	90.6
5	-100	1.53	48.4	2.00	70.5
10	-200	1.05	40.9	1.43	53.7
15	-400	.65	25.6	.90	35.1
20	-600	.28	12.7	.41	17.9
MAX. VACUUM		24.3" hg	-824mbar	24.0" hg	-813 mbar
MAX. AMBIENT AIR TEMP.		104° F	40°C	104° F	40°C
MIN. AMBIENT START TEMP.		50° F	10°C	50° F	10°C
MAX. RESTART PRESSURE		20 PSI	1.4 bar	15 PSI	1.0 bar
MAX. RESTART VACUUM		24.3"hg	-824mbar	24.0" hg	-813 mbar
MOTOR VOLTAGE/FREQUENCY		12v DC		12v DC	
MOTOR TYPE		Permanent Magnet		Permanent Magnet	
CURRENT AT RATED LOAD (AMPS)		12.8		20.0	
POWER AT RATED LOAD (WATTS)					
STARTING CURRENT (LOCKED ROTOR, AMPS)		96.6		120.0	
MIN. FULL LOAD SPEED (RPM)		2160		1900	
THERMAL PROTECTOR		No		No	
NET WEIGHT		8.25 lbs.	3.7 kg	11 lbs.	5.0 Kg

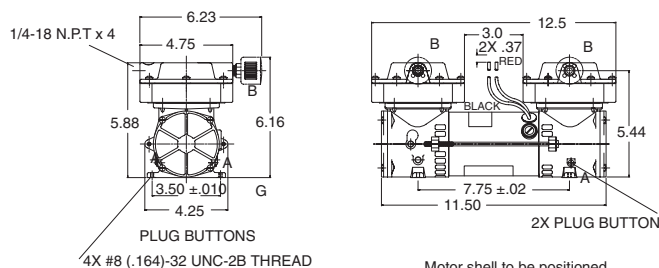
The information presented in this material is based on technical data and test results of nominal units. It is believed to be accurate and reliable and is offered as an aid to help in the selection of Thomas products. It is the responsibility of the user to determine the suitability of the product for his intended use and the user assumes all risk and liability whatsoever in connection therewith. Thomas Industries does not warrant, guarantee or assume any obligation or liability in connection with this information.

NOTE: Models pictured are representative of the series and do not represent a specific model number. Consult factory for detailed physical description.

910CDC22/12



2907CDC22/12



THOMAS
A Gardner Denver Product

Thomas Division
1419 Illinois Ave
Sheboygan, WI 53081 USA
Phone: (920) 457-4891
Fax: (920) 451-4276
www.gd-thomas.com